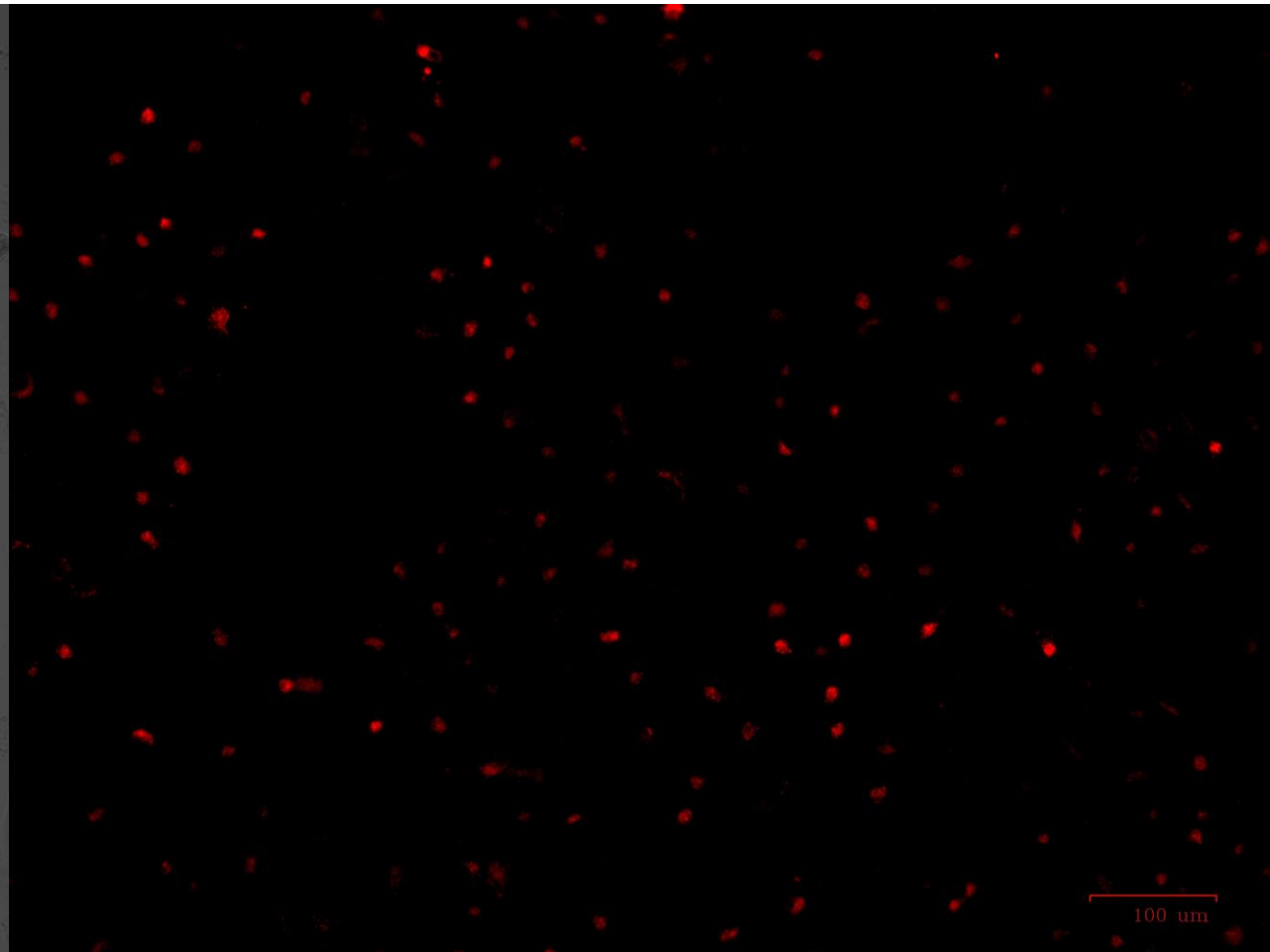
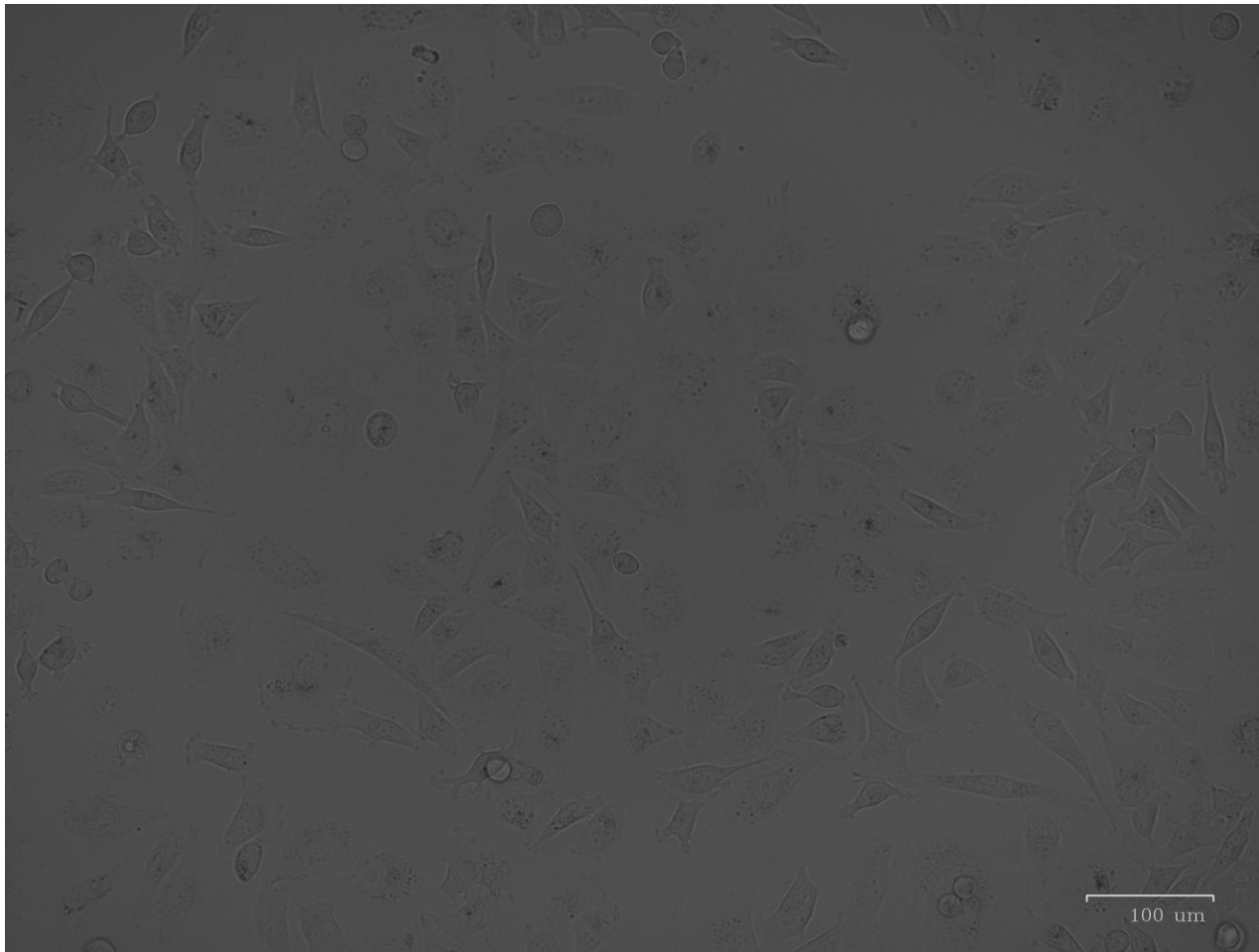


# MitoClox (100 nM 1h)

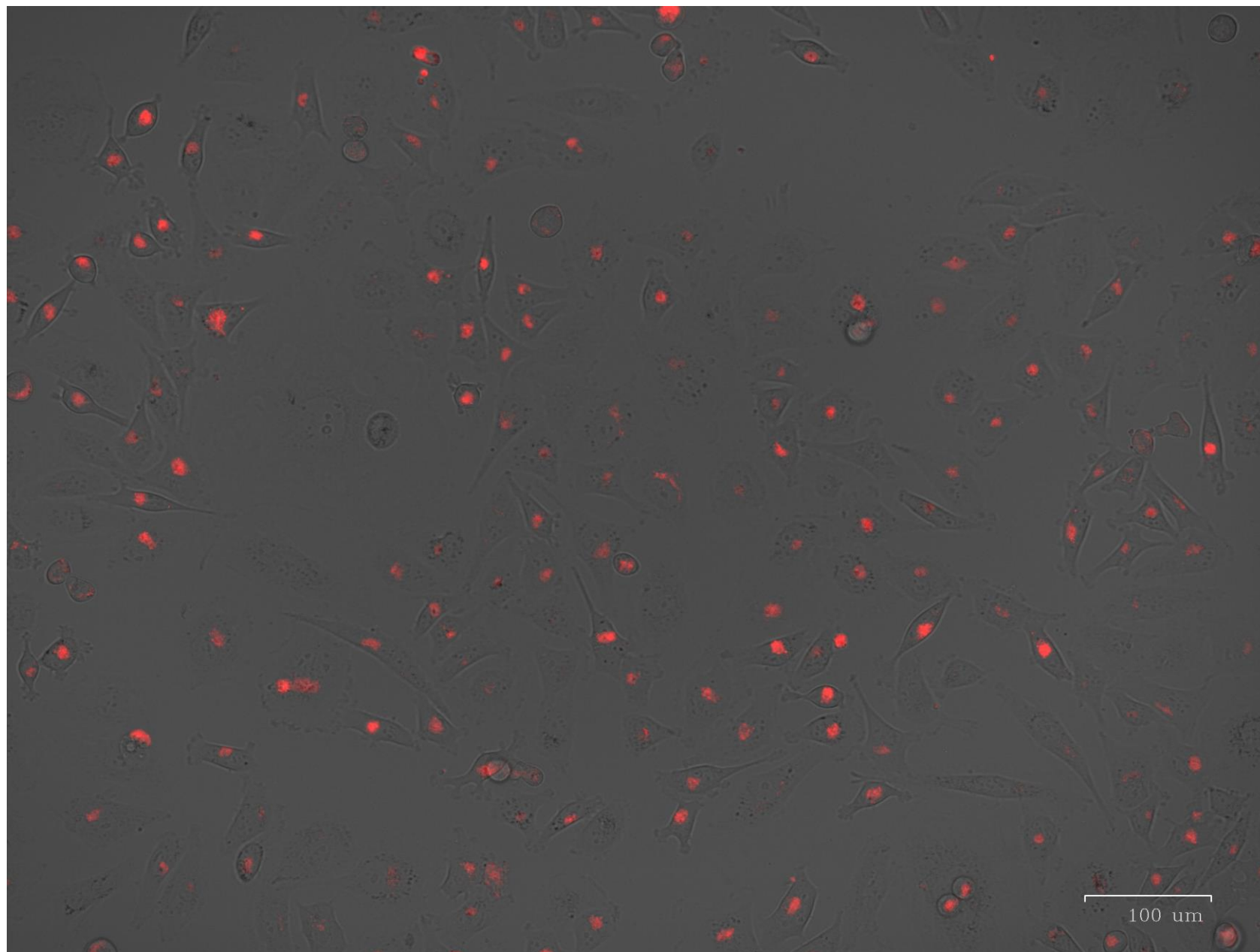
Клетки LUC, IGFBP6

Ctrl, DHA 200 mkM 3h

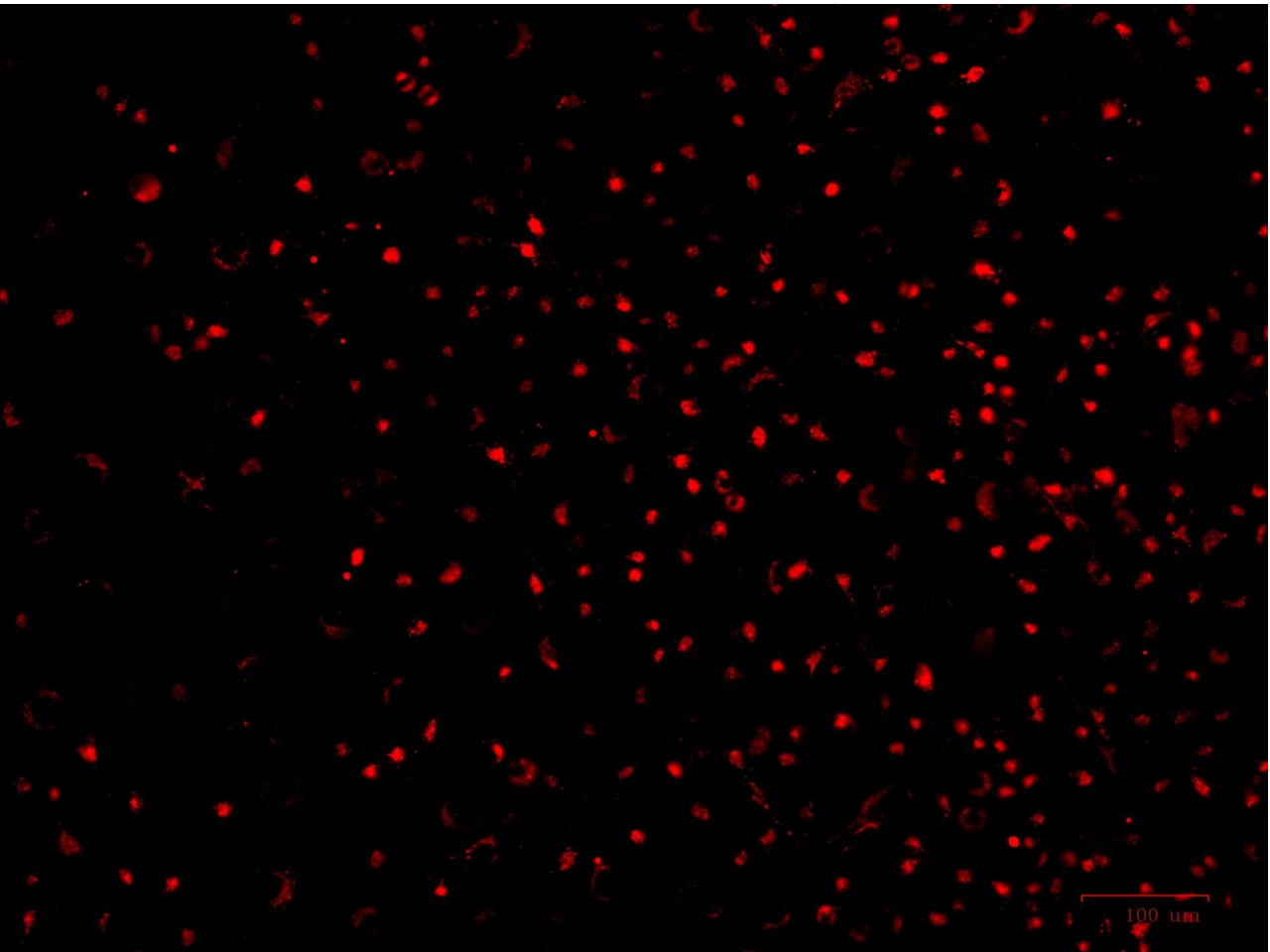
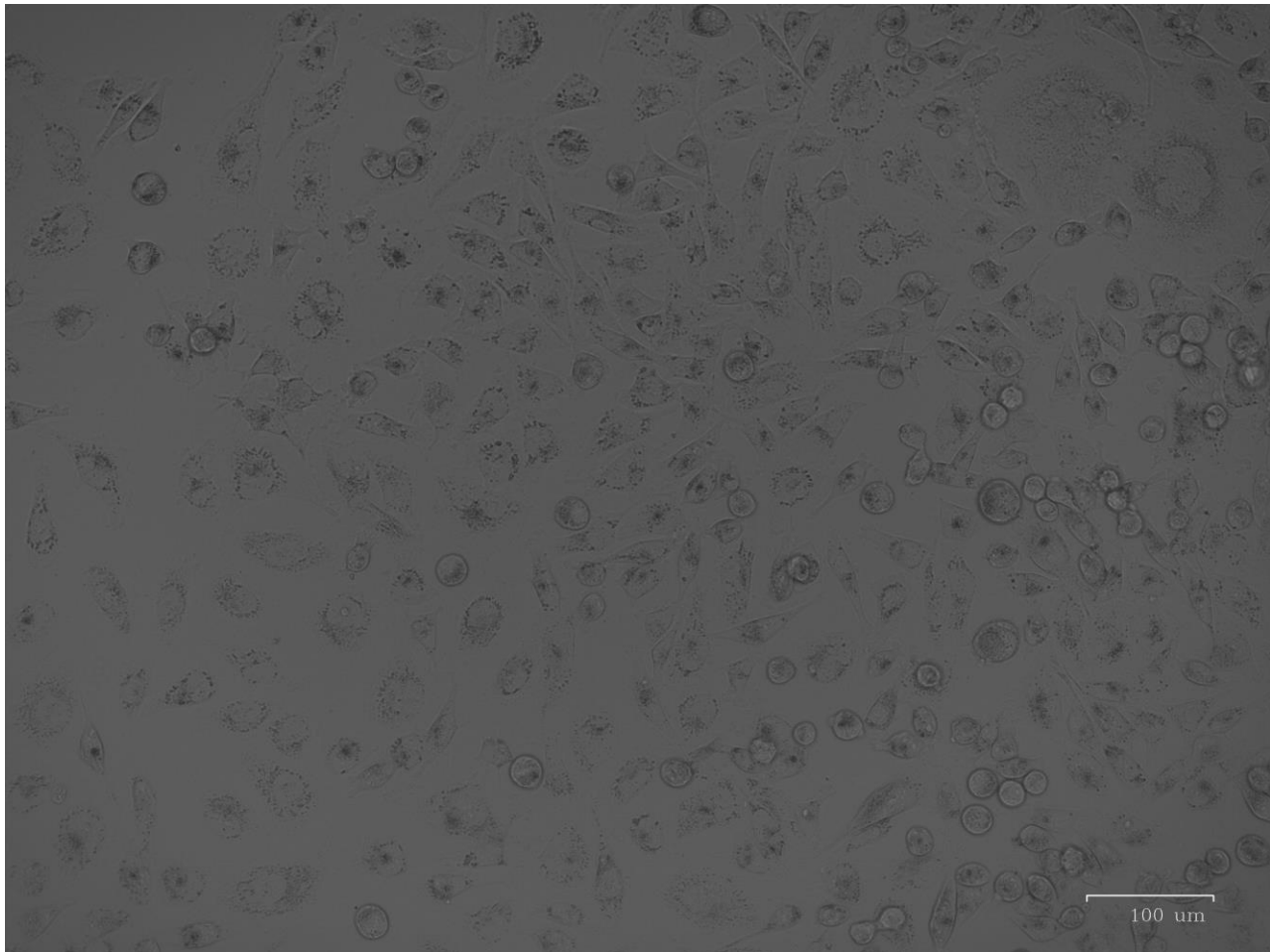
# LUC ctrl brightfield&red



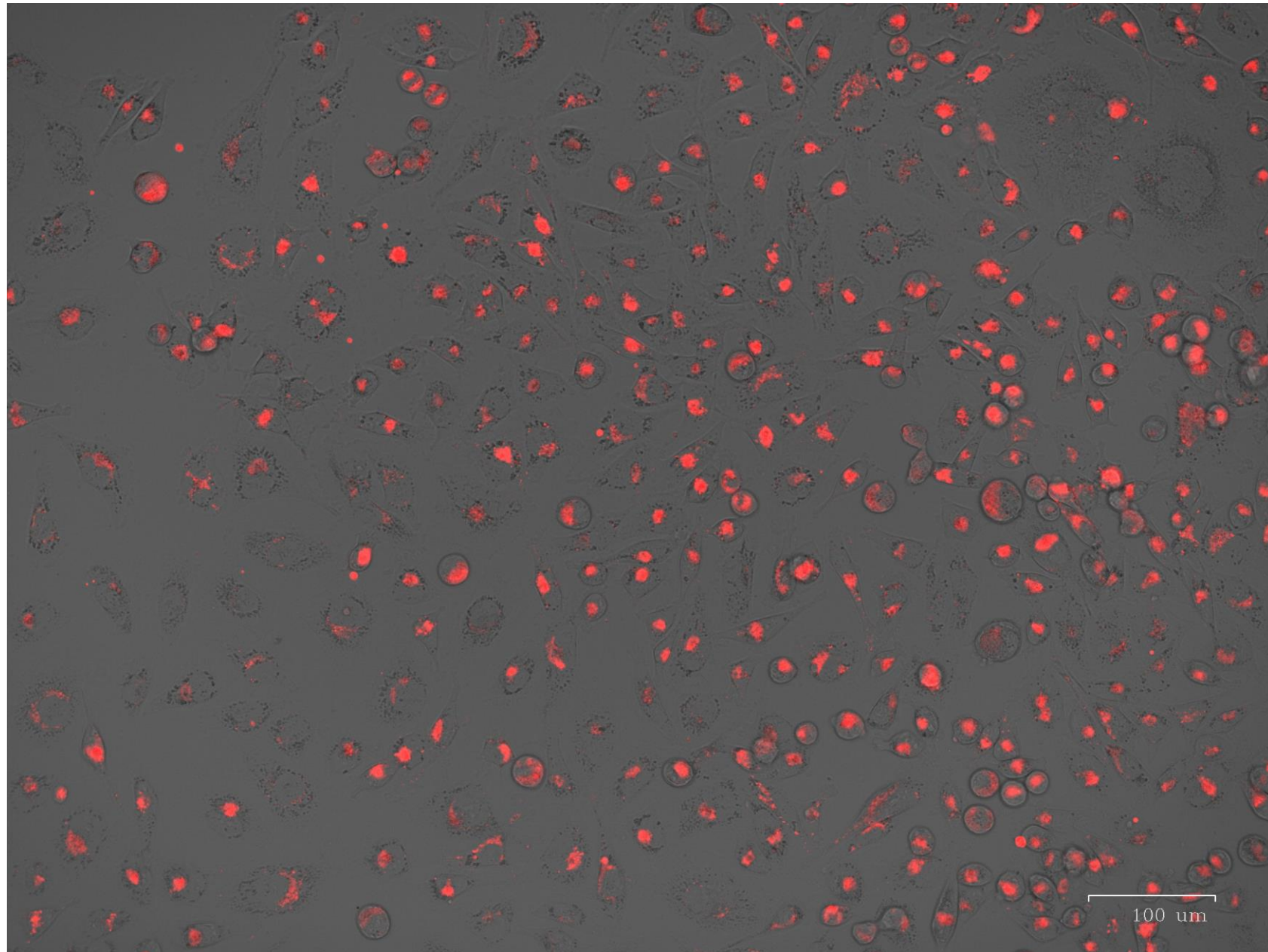
LUC ctrl brightfield&red merged



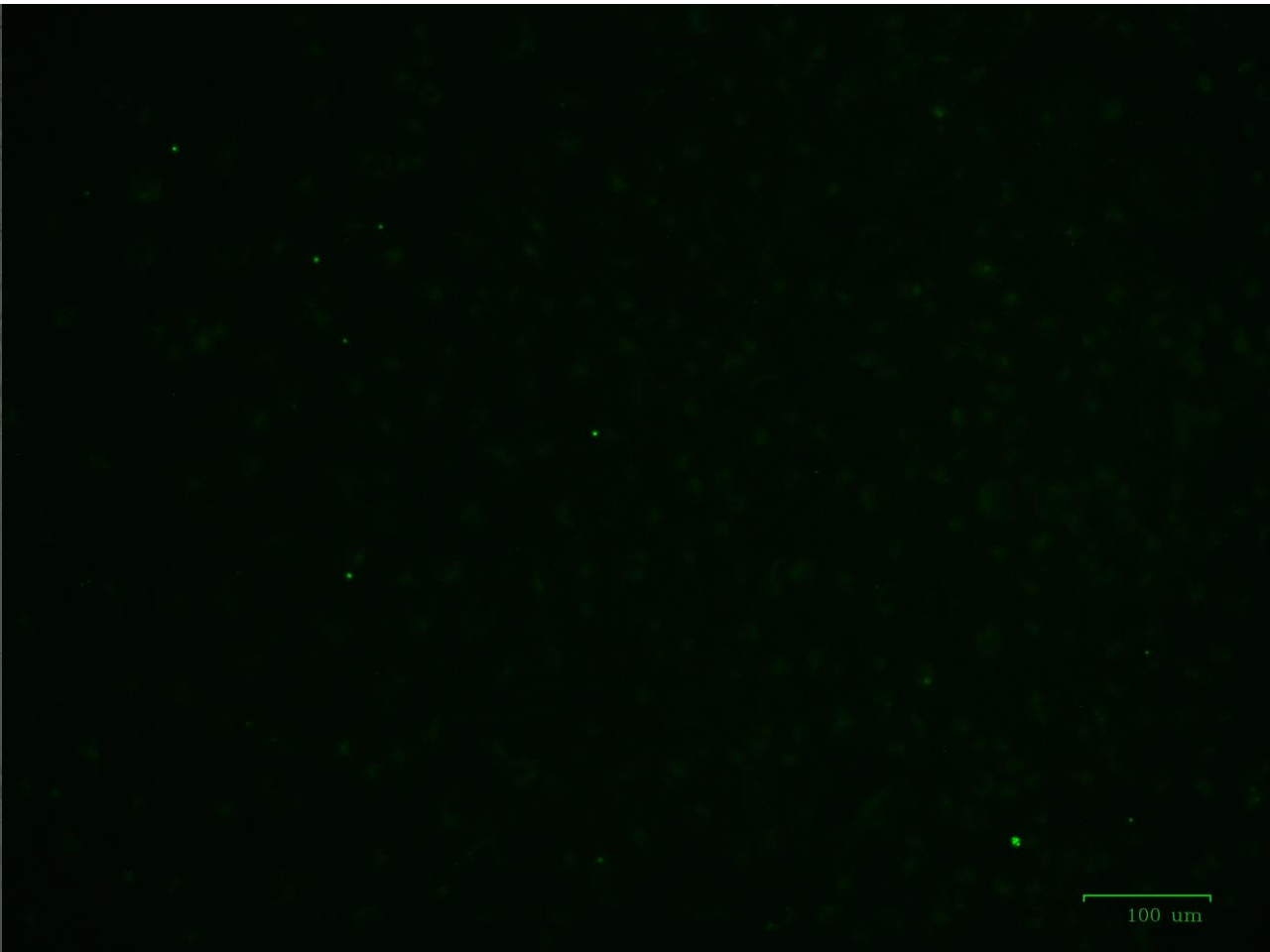
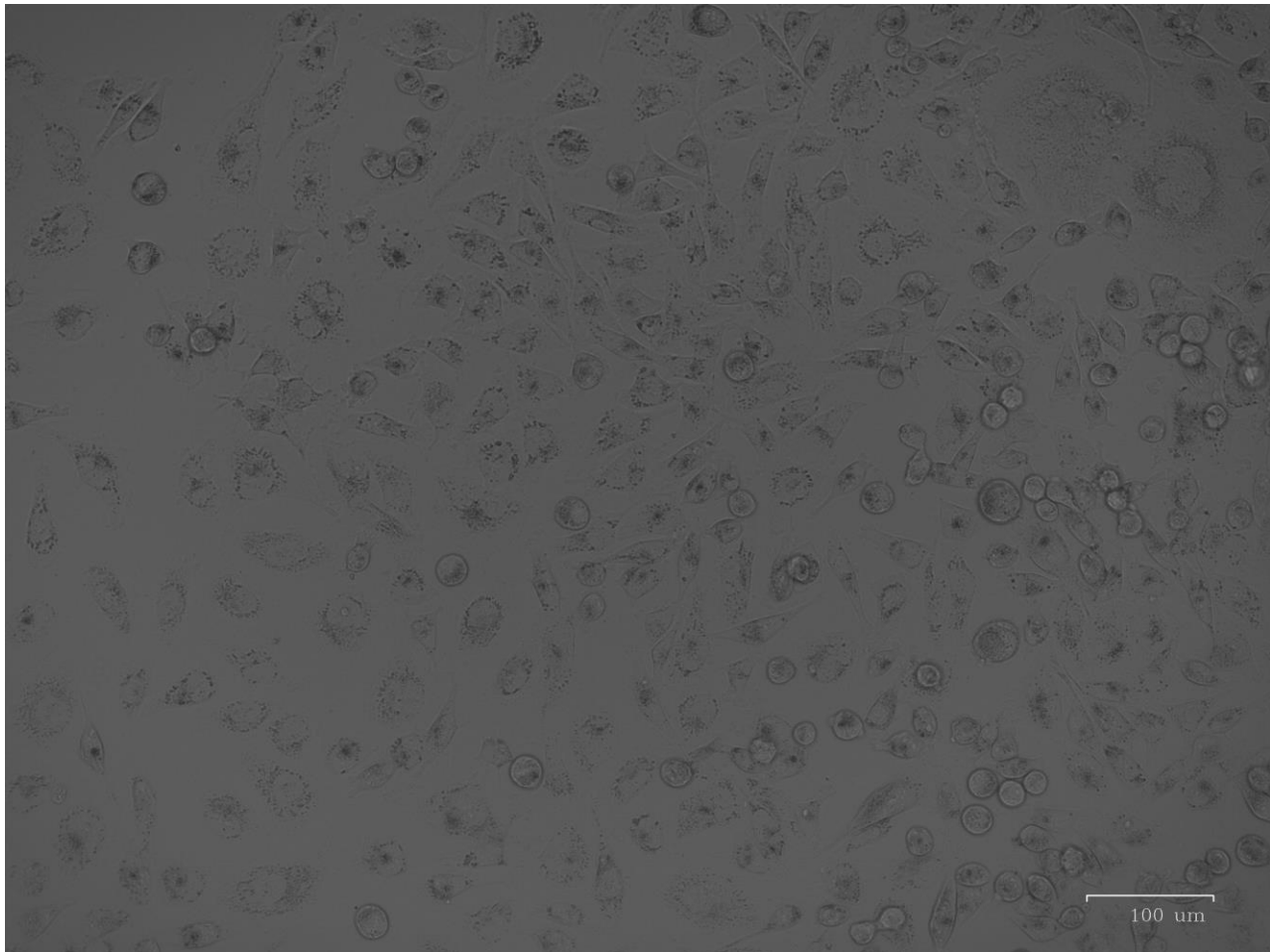
# LUC DHA brightfield&red



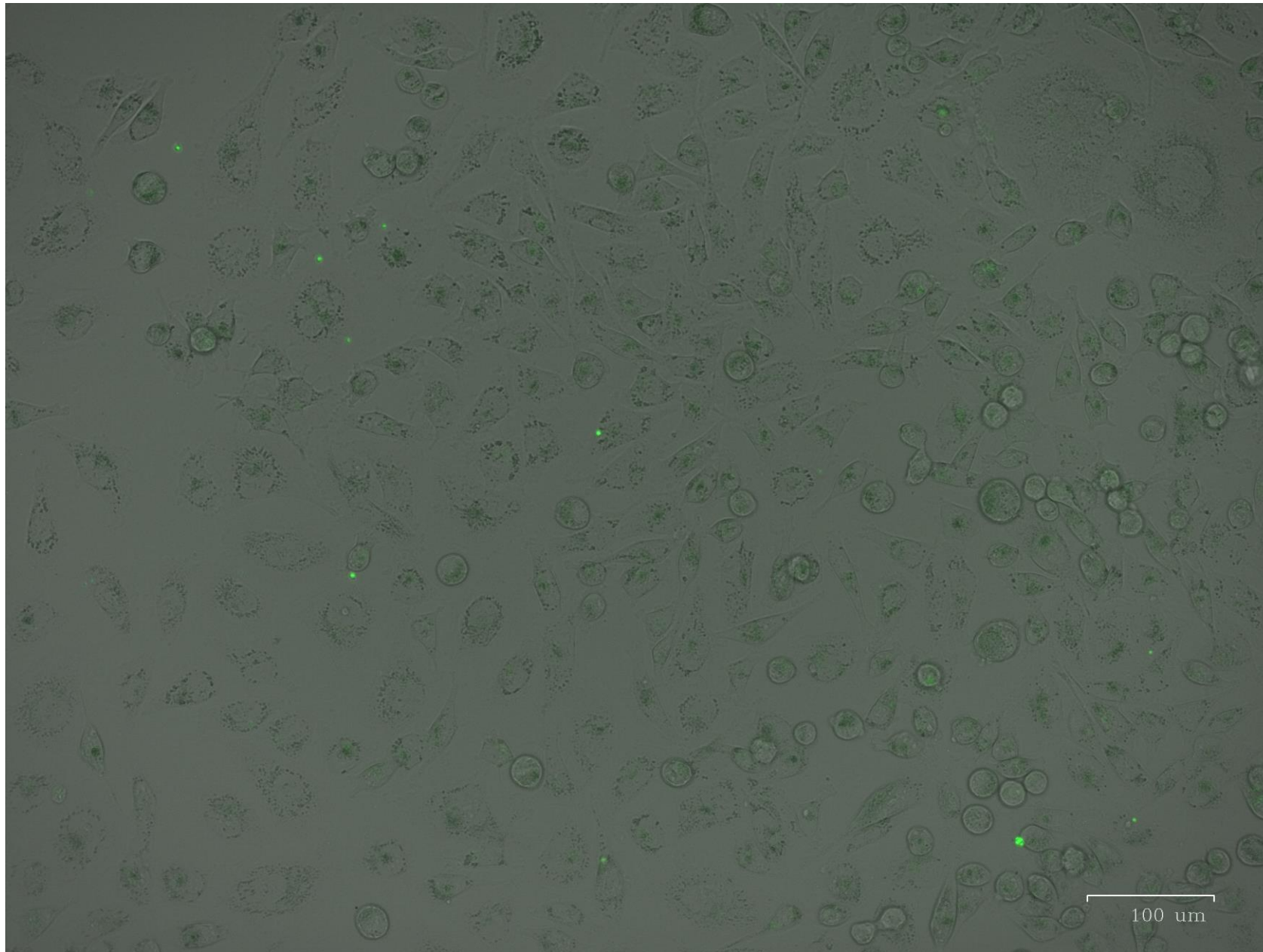
LUC DHA brightfield&red merged



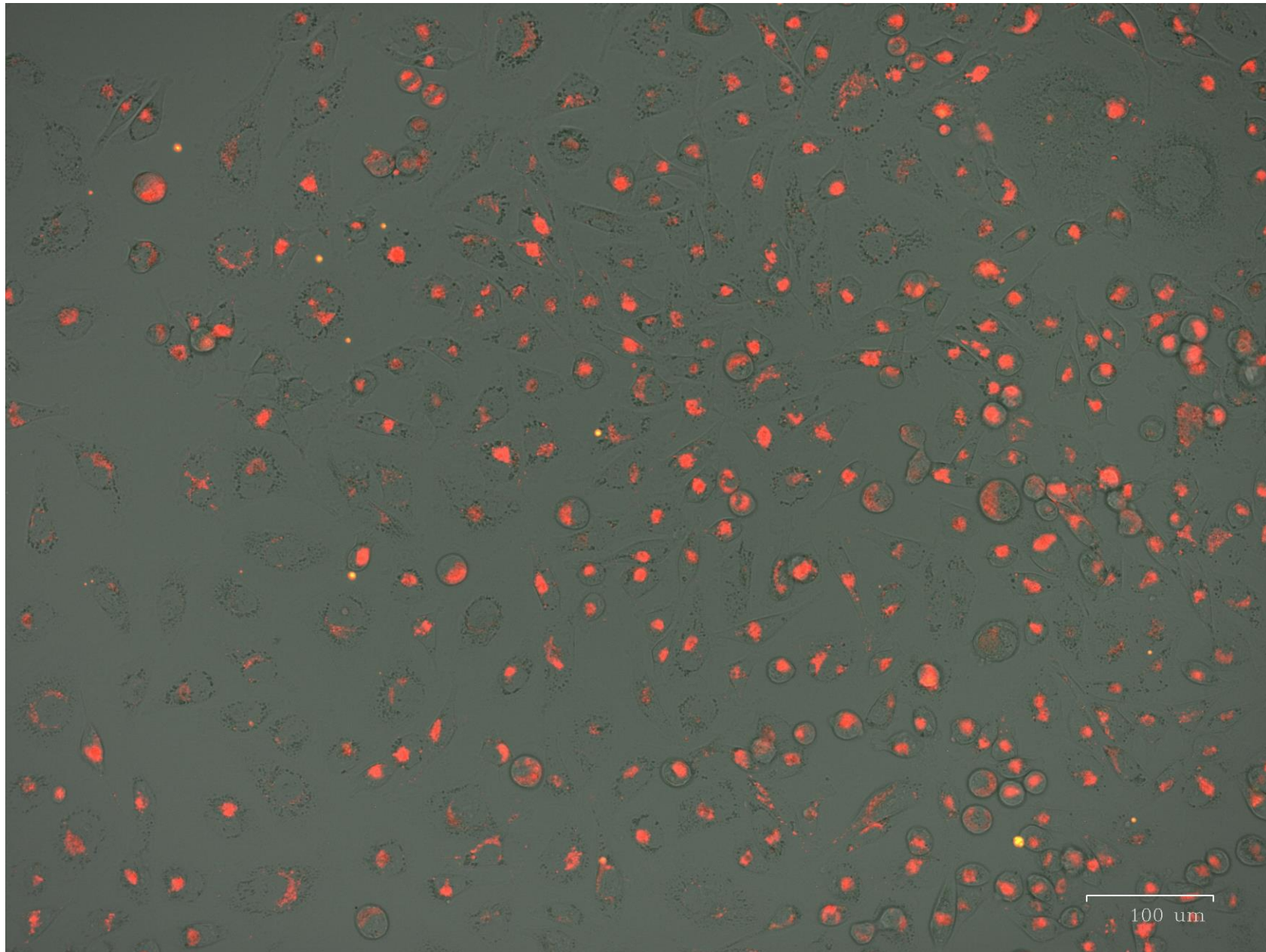
# LUC DHA brightfield&green



# LUC DHA brightfield&green merged

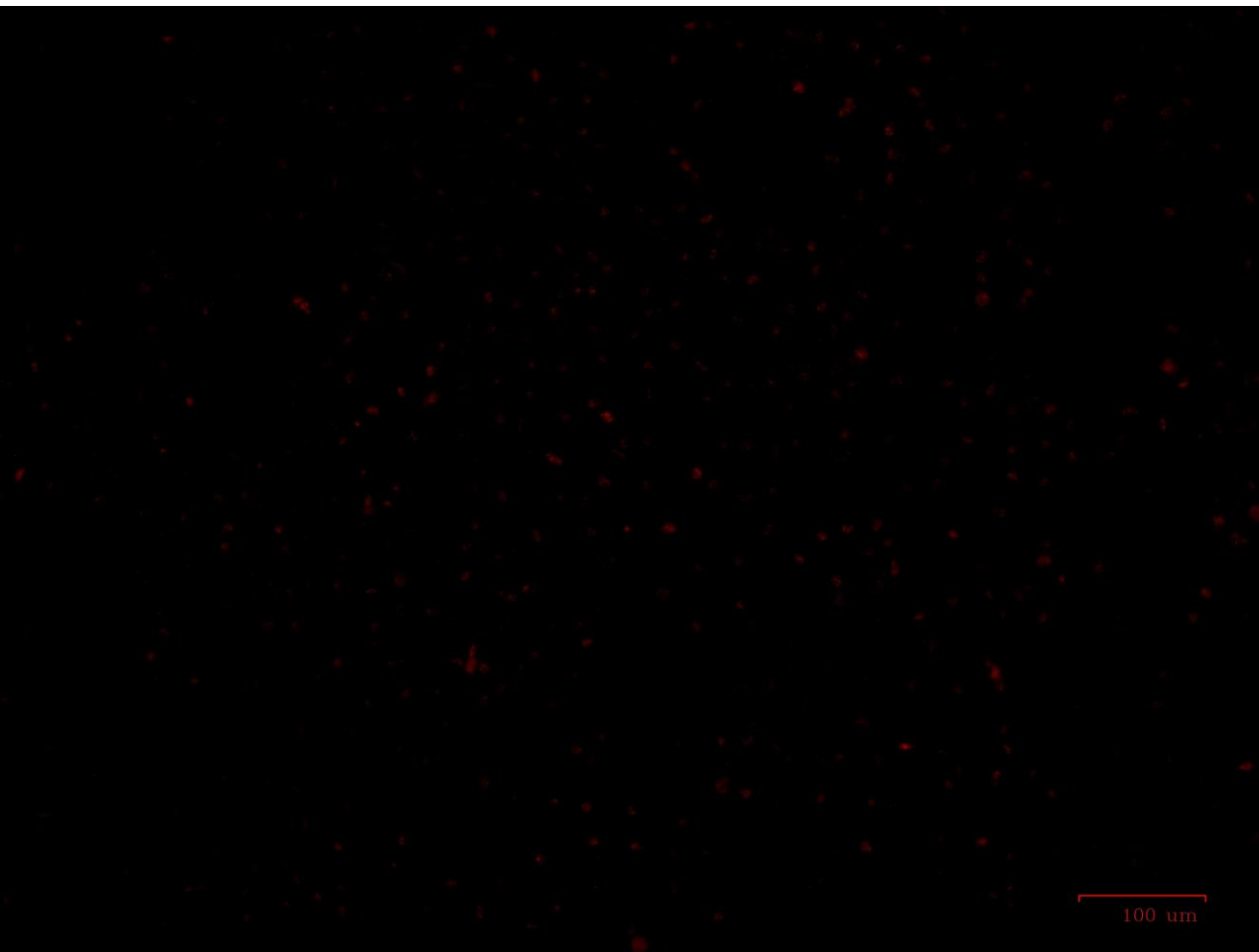
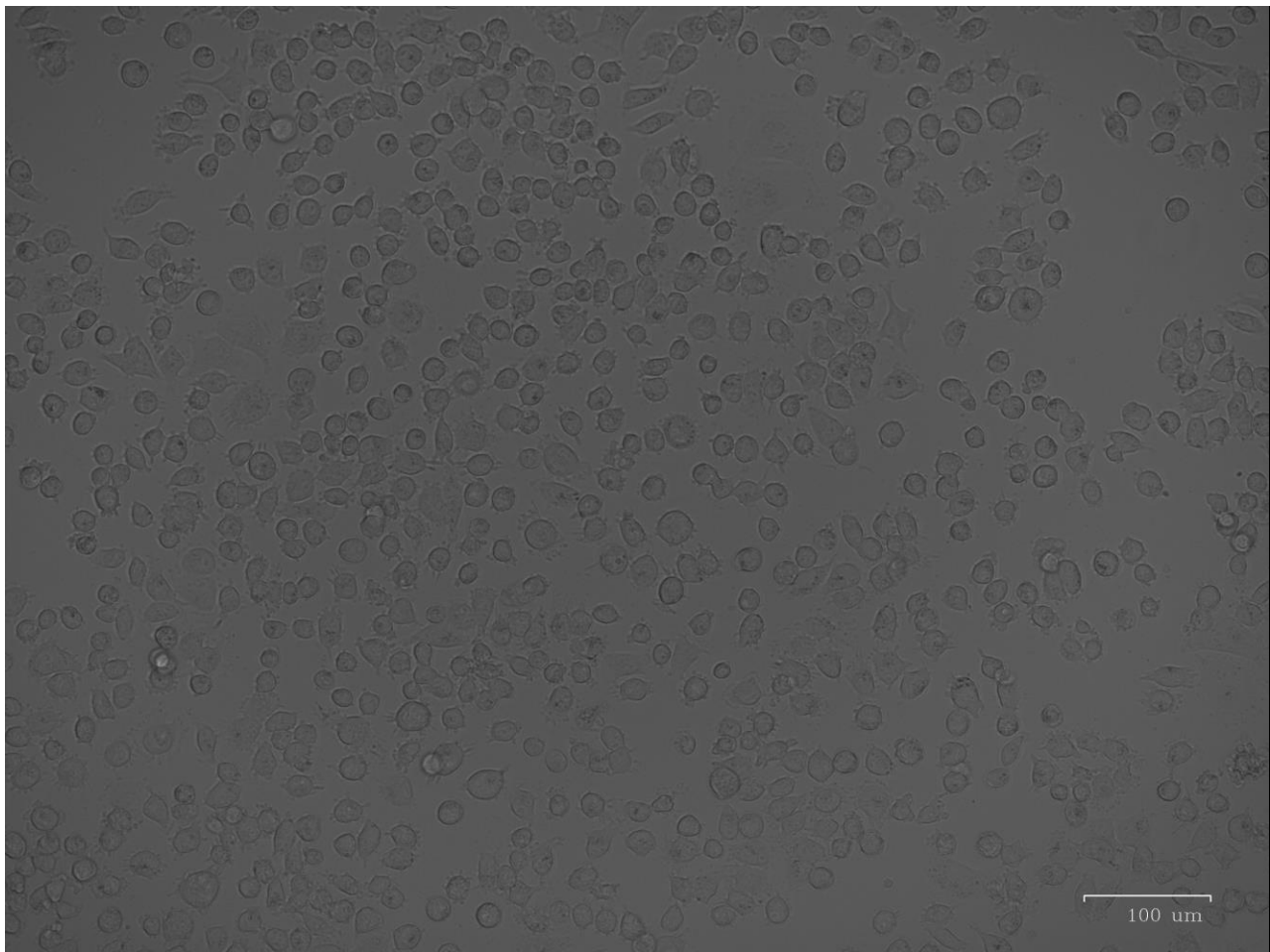


# LUC DHA brightfield&red&green merged

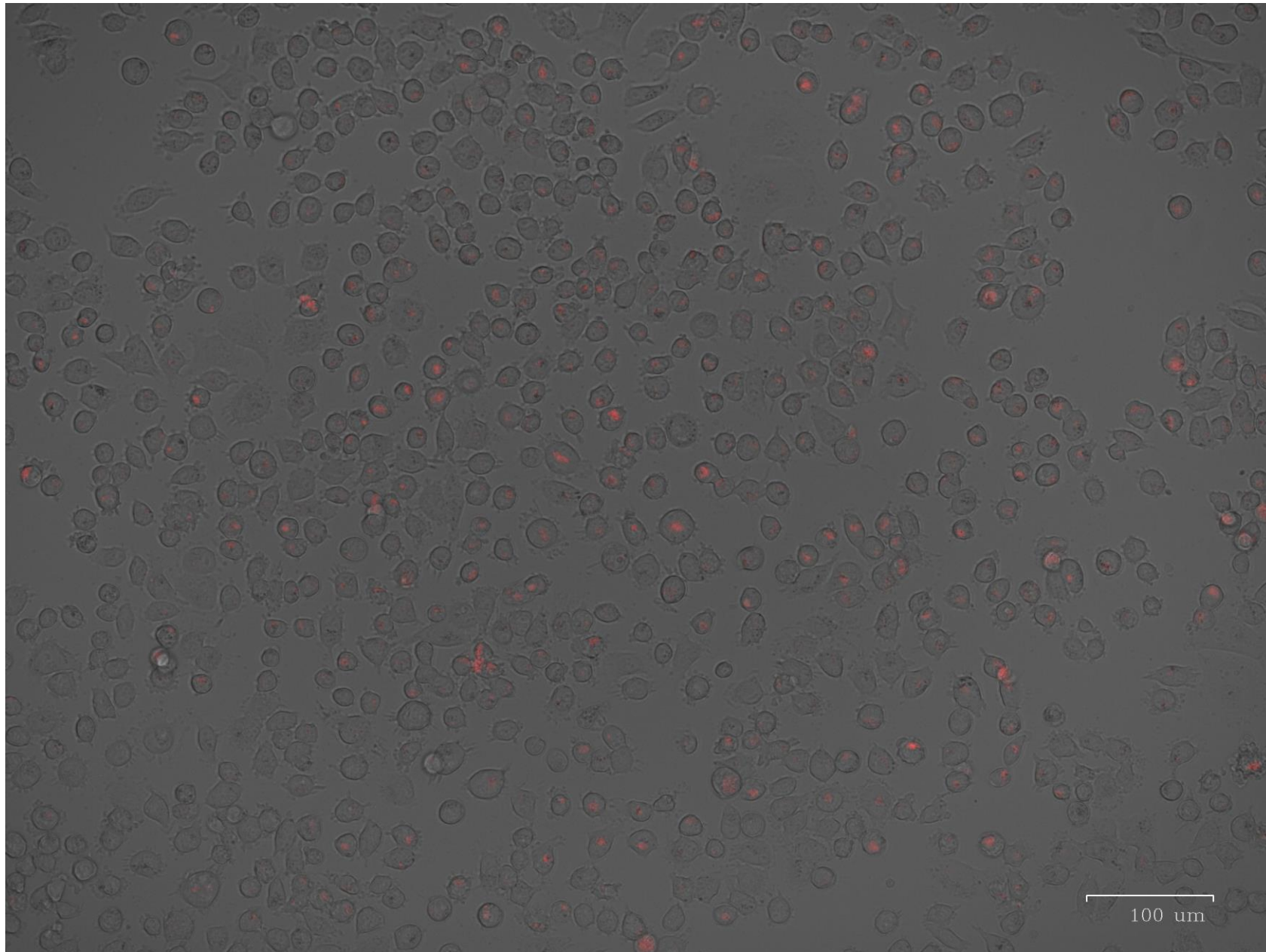




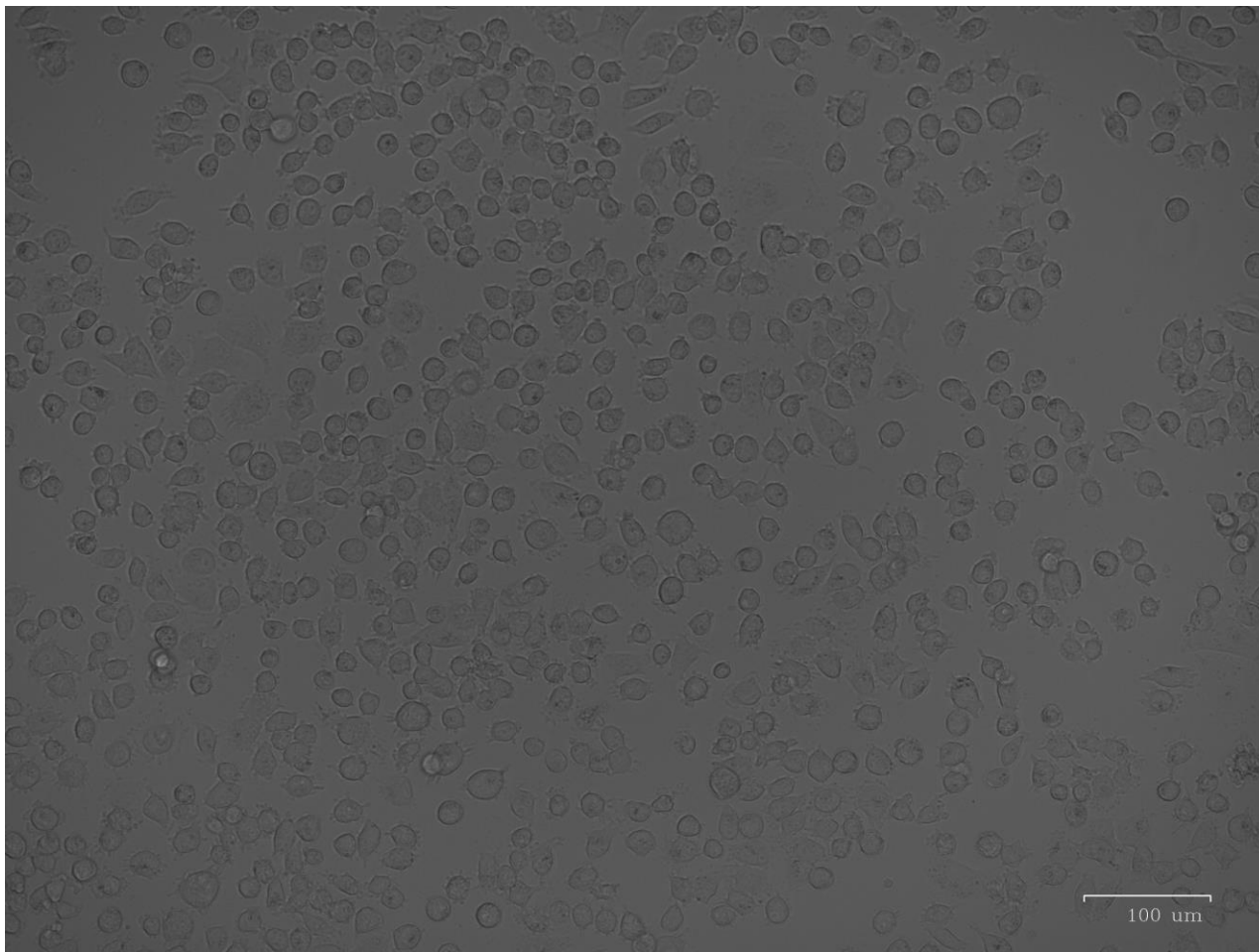
# IGF ctrl brightfield&red



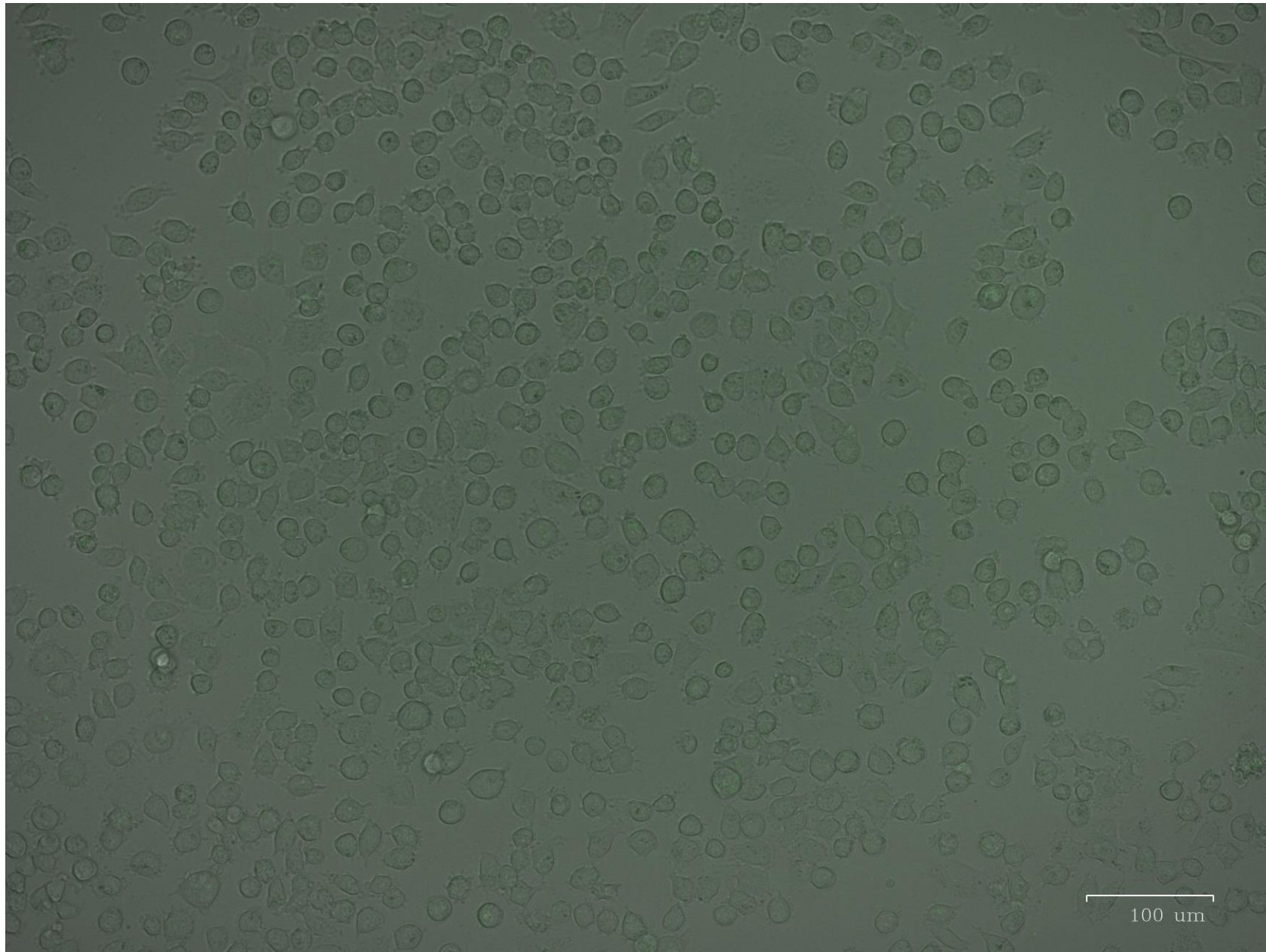
# IGF ctrl brightfield&red merged



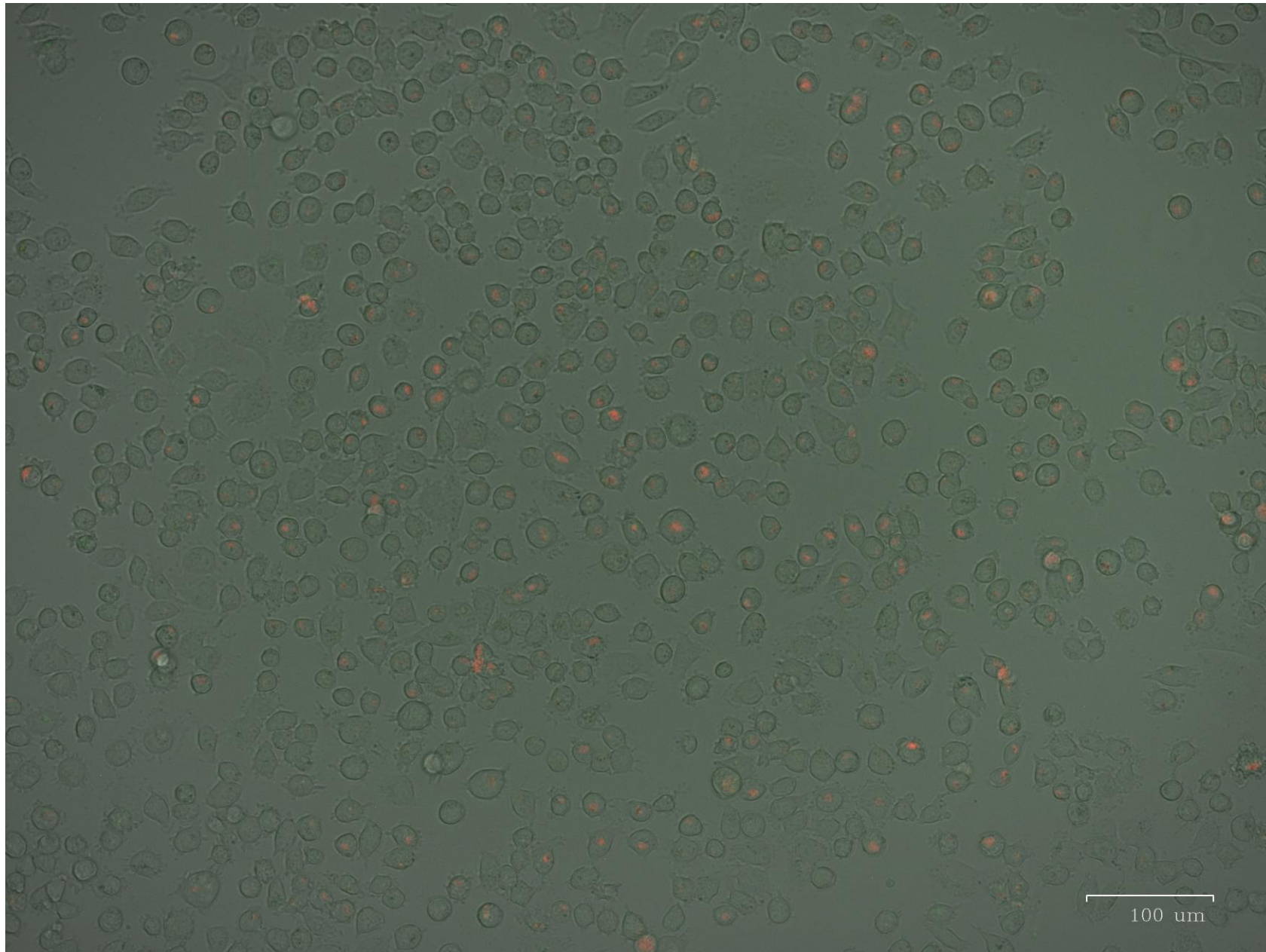
# IGF ctrl brightfield&green



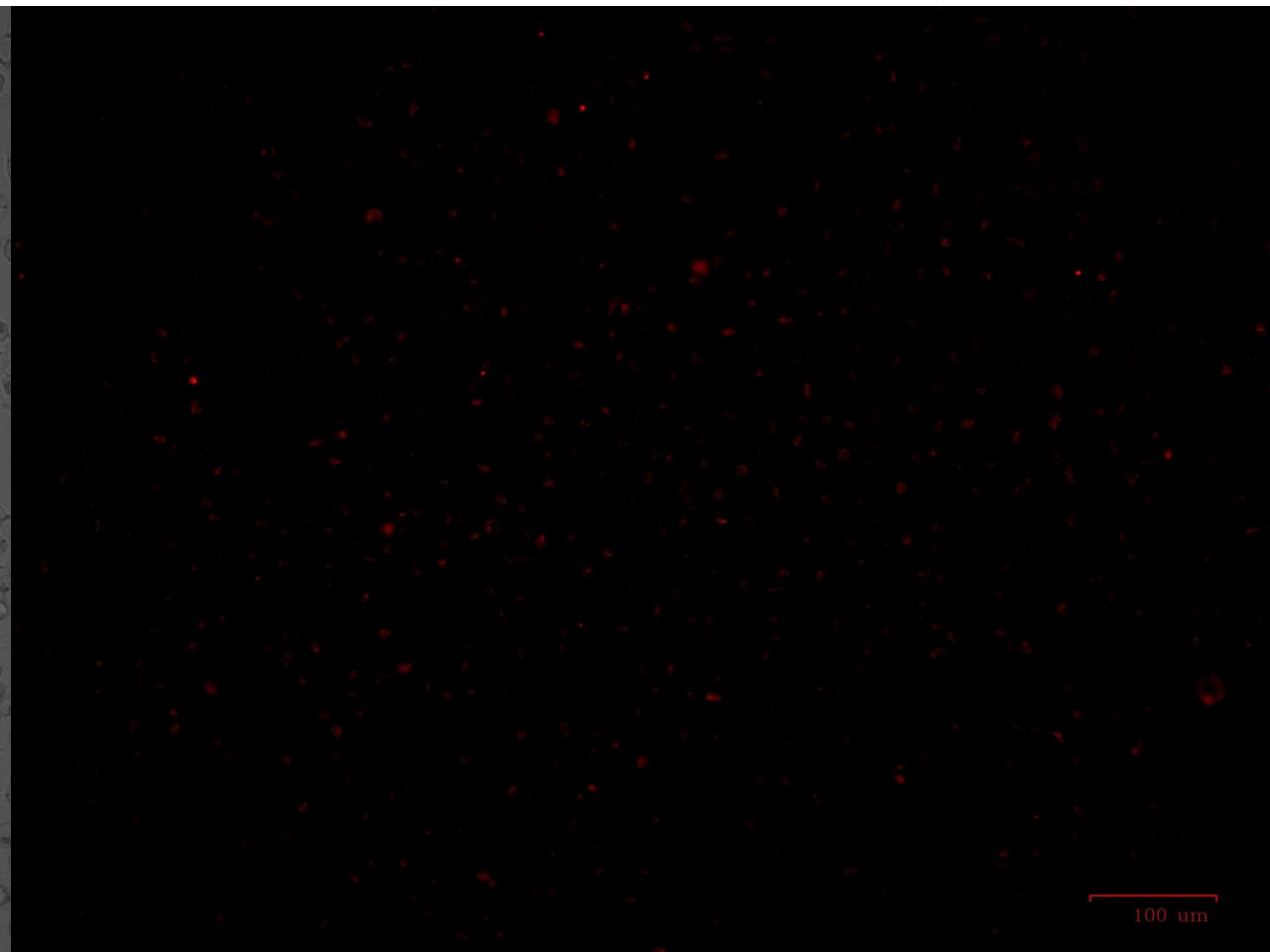
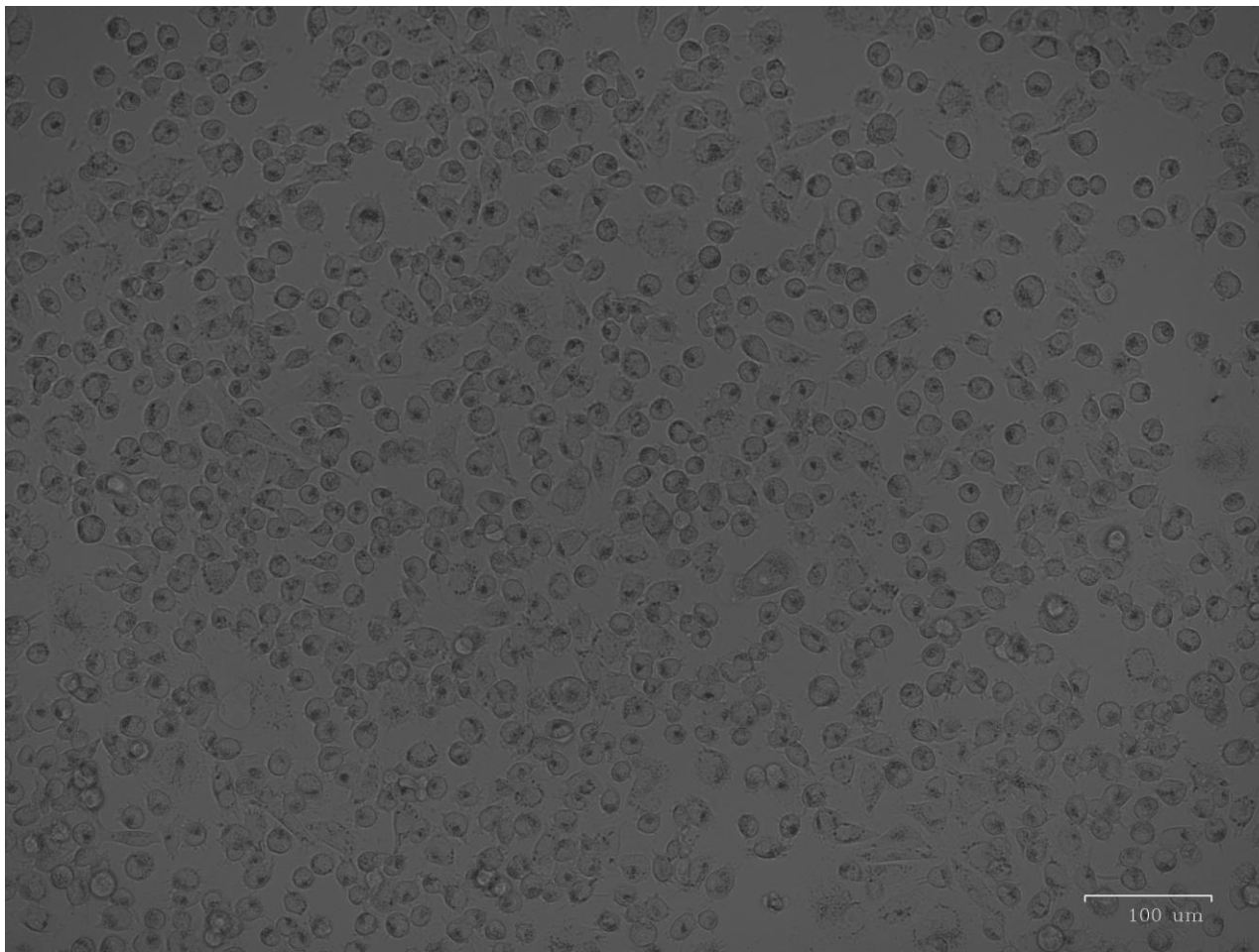
# IGF ctrl brightfield&green merged



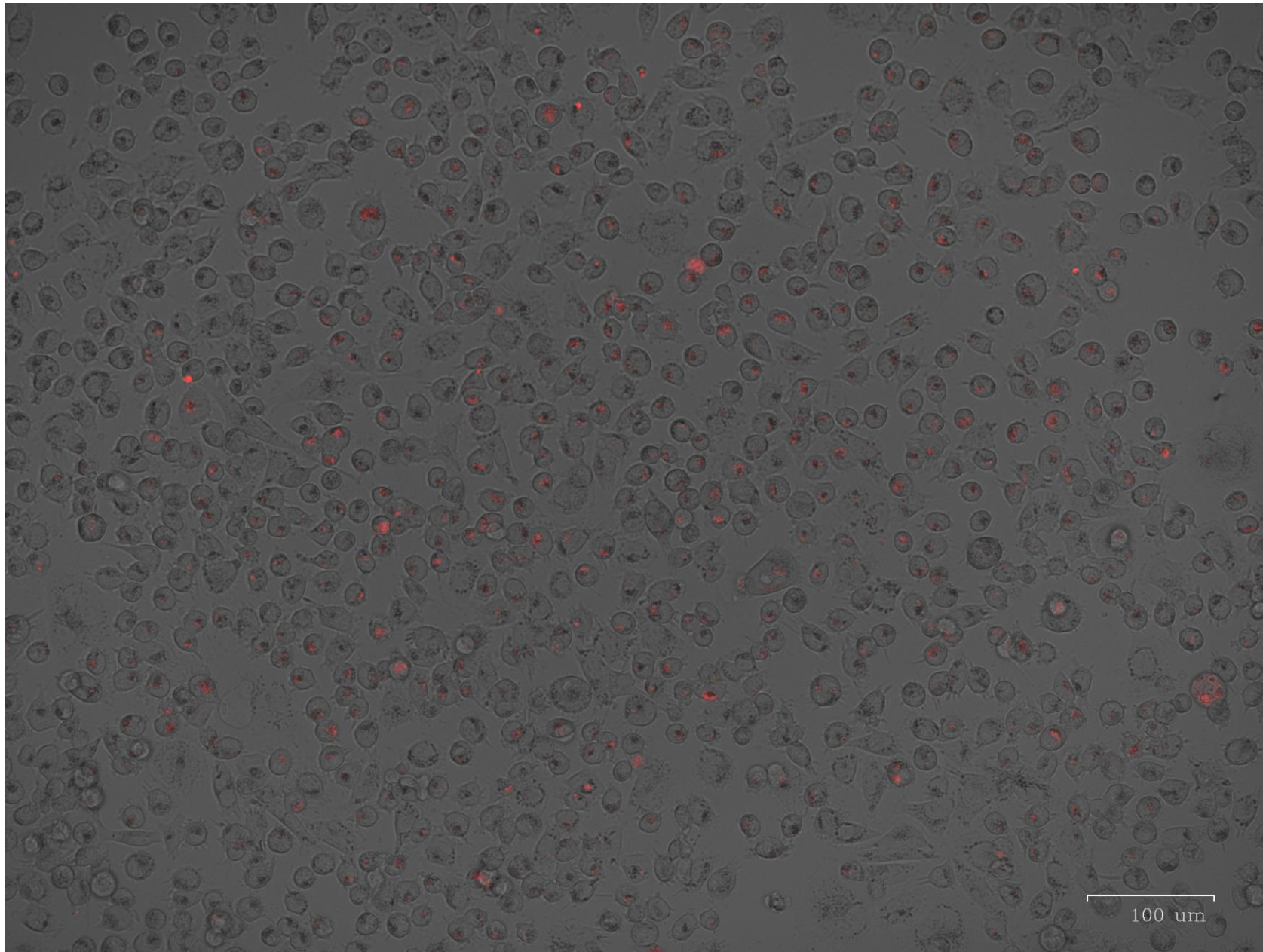
**IGF ctrl brightfield&red&green merged**



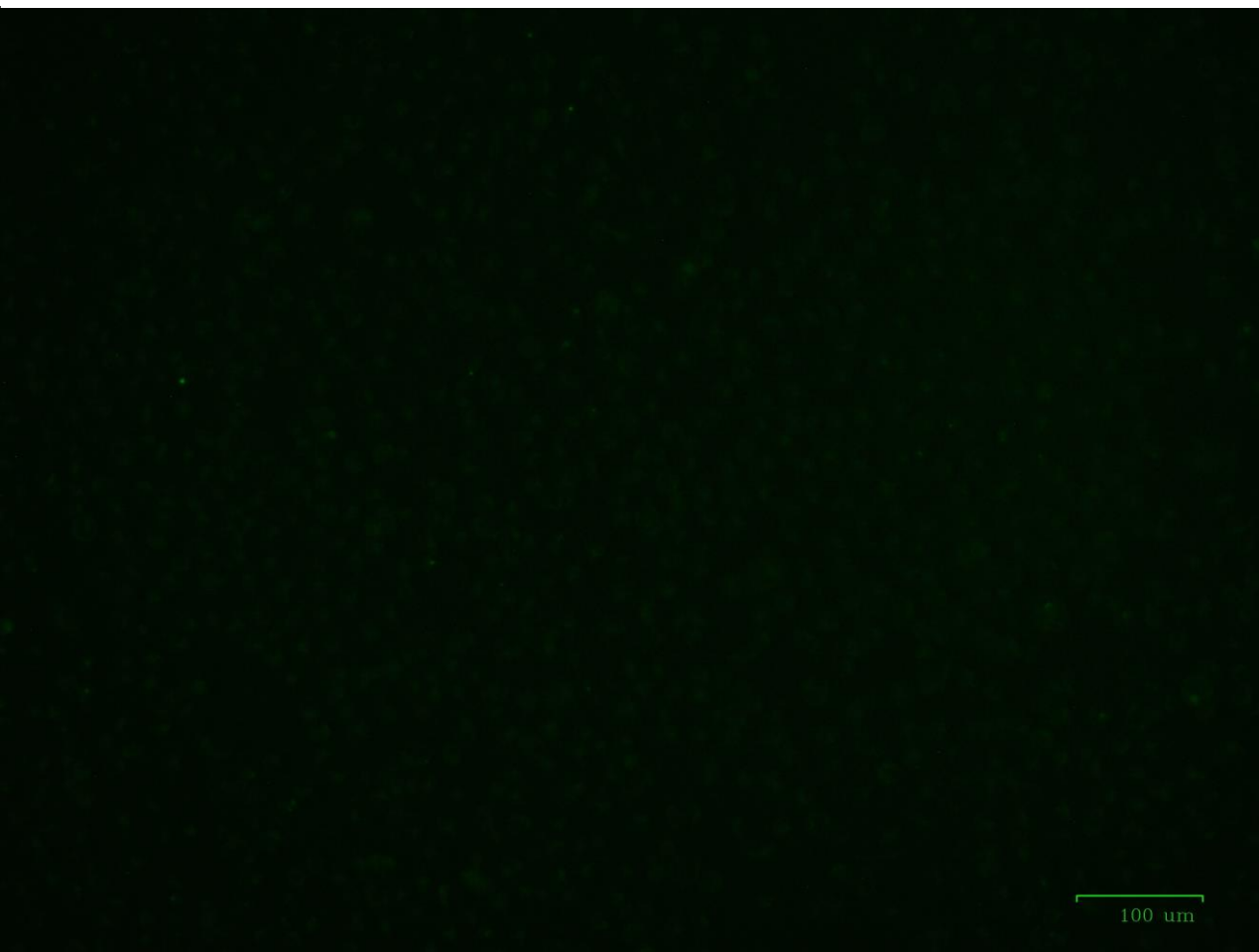
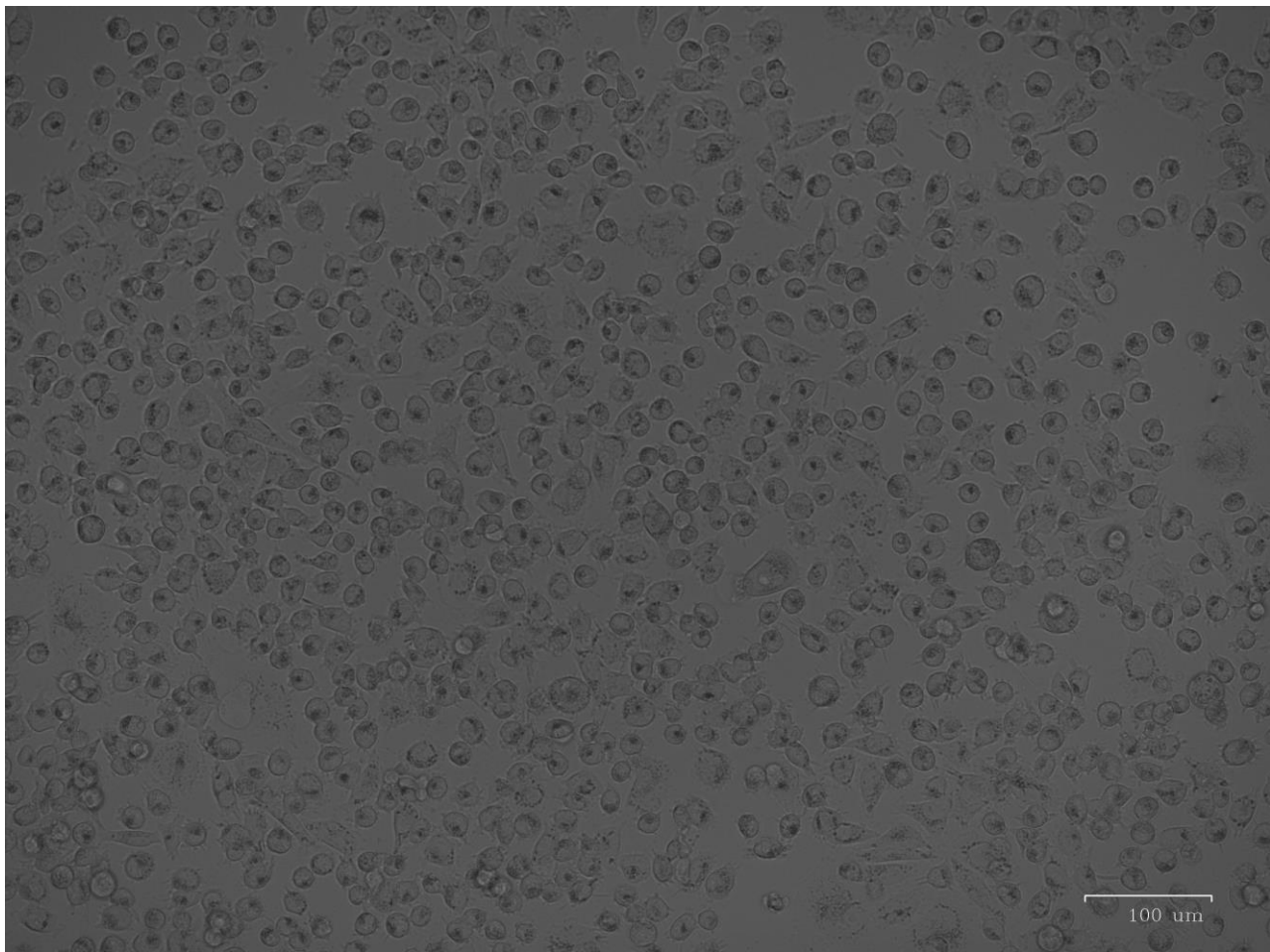
# IGF DHA brightfield&red



# IGF DHA brightfield&red merged

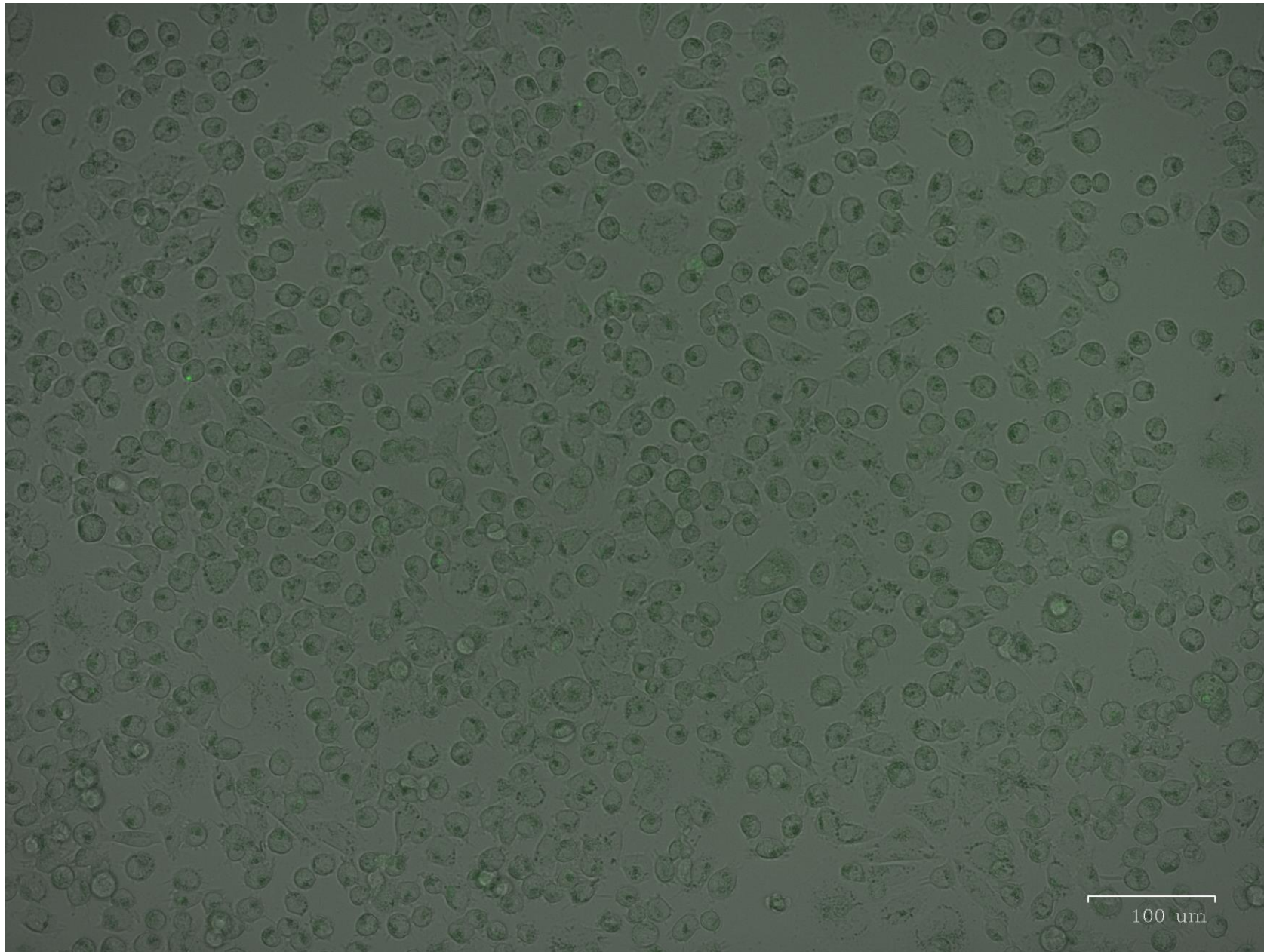


# IGF DHA brightfield&green

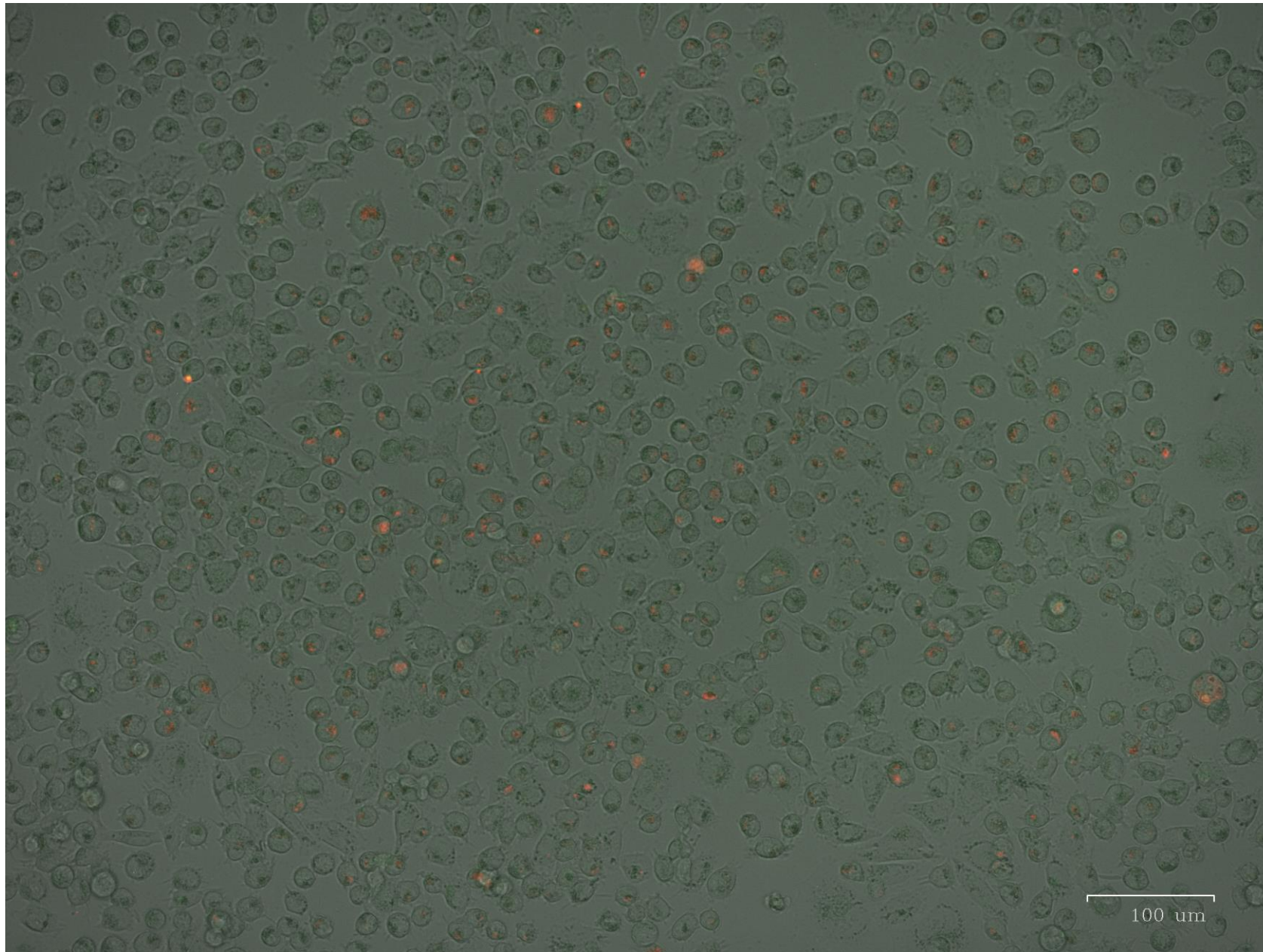




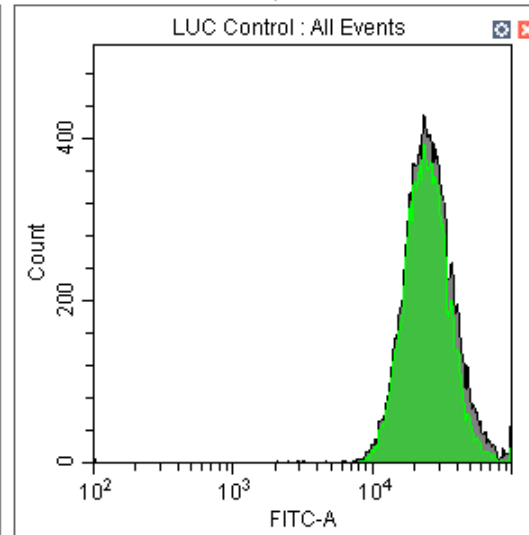
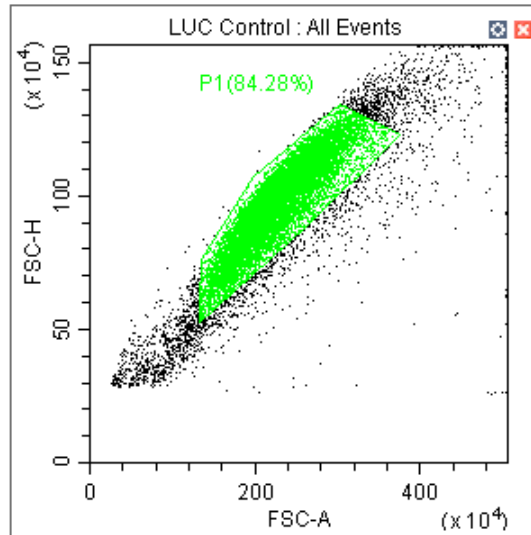
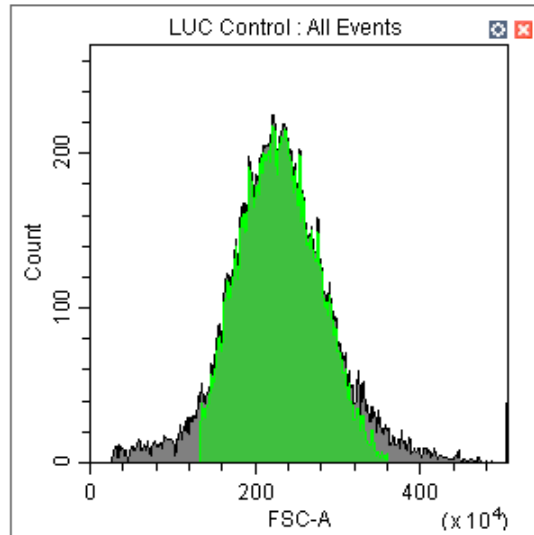
# IGF DHA brightfield&green merged



# IGF DHA brightfield&red&green merged



Проточник



Tube Name: LUC Control

Sample ID:

| Population | total   | % Parent | Median FITC-A | SD FITC-A | Median PE-A | SD PE-A | Median PC5.5-A | SD PC5.5-A |
|------------|---------|----------|---------------|-----------|-------------|---------|----------------|------------|
| All Events | 10.0... | 100.00%  | 24353.9       | 16783.1   | 60148.9     | 36288.1 | 61078.9        | 42825.2    |
| P1         | 28%     | 84.28%   | 23686.3       | 11363.7   | 59264.5     | 27617.2 | 59887.9        | 29661.7    |

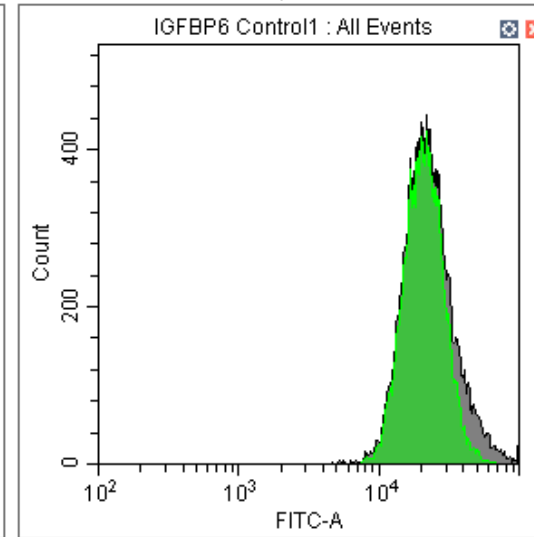
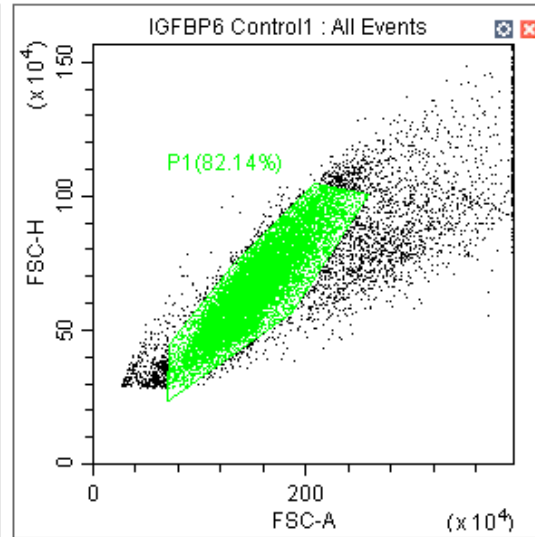
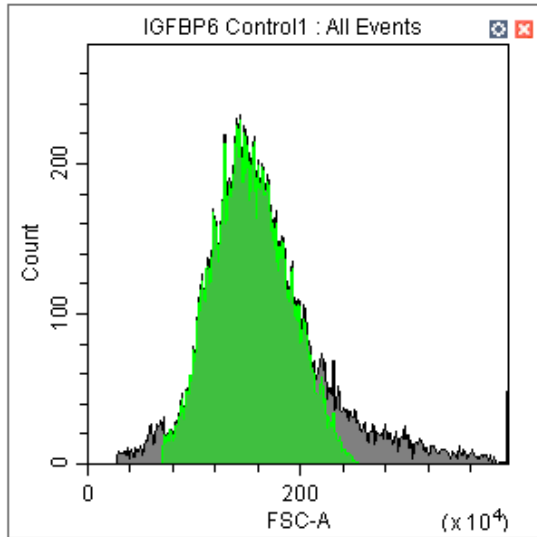
Tube Name: LUC DHA200

Sample ID:

| Population | Events | % Total  | % Parent | Median FITC-A | SD FITC-A | Median PE-A | SD PE-A | Median PC5.5-A |
|------------|--------|----------|----------|---------------|-----------|-------------|---------|----------------|
| All Events | 16379  | 100.0... | 100.00%  | 38344.8       | 28399.3   | 88071.6     | 57790.4 | 79341.4        |
| P1         | 12179  | 74.36%   | 74.36%   | 37902.2       | 16004.8   | 87762.7     | 35748.8 | 78658.1        |

**LUC ctrl: green/red ratio = 0,4**

**LUC DHA: green/red ratio = 0,43**



Tube Name: IGFBP6 Control1

Sample ID:

| Population   | Events | % Total  | % Parent | Median FITC-A | SD FITC-A | Median PE-A | SD PE-A | Median PC5.5-A |
|--------------|--------|----------|----------|---------------|-----------|-------------|---------|----------------|
| ● All Events | 14749  | 100.0... | 100.00%  | 21426.8       | 24343.7   | 27621.1     | 26659.6 | 27048.4        |
| ● P1         | 12115  | 82.14%   | 82.14%   | 20419.7       | 10290.8   | 26393.5     | 12632.8 | 25707.9        |

Tube Name: IGFBP6 DHA200

Sample ID:

| Population   | Events | % Total  | % Parent | Median FITC-A | SD FITC-A | Median PE-A | SD PE-A | Median PC5.5-A |
|--------------|--------|----------|----------|---------------|-----------|-------------|---------|----------------|
| ● All Events | 15255  | 100.0... | 100.00%  | 30276.0       | 33953.1   | 37618.5     | 31693.5 | 33096.1        |
| ● P1         | 11622  | 76.18%   | 76.18%   | 29107.6       | 11658.4   | 36283.6     | 13272.7 | 31874.7        |

IGF ctrl: green/red ratio = 0,77

IGF DHA: green/red ratio = 0,8